



2026 EVENT DIRECTORY



Visit Us Online at: gandmridingclub.com



TABLE OF CONTENTS

GENERAL INFORMATION

Year End Award Information	1
General Class Descriptions	4
Facebook Page	14
Membership Perks	15
Diamond Sponsors	22
Platinum Sponsors	23
Directions to Orange County Park	24
2026 Board Members.....	25
2026 Executive Officers.....	25
Other Contacts	25
2026 Dates & Event Information	BC

HORSE SHOW INFO

Horse Show Rules	2-3
Divisions/Classes	
Get Your Shine On	5
Leadline	5
Walk/Trot Equ.	6
Mini Crossrail	6
Costume Class (<i>Fall Only</i>) ..	6
Crossrail Hunter	7
Short/Long Stirrup.....	7
English Pleasure	8
2' Schooling Hunter.....	8
2'-2'6" English Equ.	8
2'6" Schooling Hunter ...	9
Beginner Western	9
Junior Western	9
Open Western	9
2' Jumpers.....	10
Crossrail Jumpers	10
Ring 1 Schedule	12
Ring 2 Schedule	13

GYMKHANA INFO

Gymkhana Rules	16-17
Divisions/Classes	
Leadline	18
Walk/Jog	16
Walk/Jog/Lope.....	19
Youth	19
Adult	19
Costume Class (<i>Fall Only</i>)	19
Open Jackpot Barrels ...	20
Gymkhana Patterns	20
Order of Go	21

YEAR-END CHAMPIONSHIP AWARDS CLASS LIST

Cumulative point system for year-end awards point value: 6, 5, 4, 3, 2, 1. Riders must participate in at least (2) two shows in each division for points to count towards year-end championships and enter more than half of the classes in a division to be eligible for Day-of Champion/Reserve Champion and/or Year-End Champion/Reserve Champion awards. Volunteer members must fulfill their membership requirements at the time of the last event, or may pay for basic membership to be eligible for Year-End Awards. Year-End divisions with less than four entries will be pro-rated.

HORSE SHOWS:

- Leadline (7 & Under) Division** - Reserve Sponsored by Butler Const. Group
- Walk/Trot Equitation Division** - Reserve Sponsored by Beam Enterprises, Inc.
- Mini Crossrail Equitation Division**
- Crossrail Hunter Division**
- Short/Long Stirrup Division** - Champion Sponsored by EZ Buy Auto Sales, Inc.
- 2' Schooling Hunter Division** - Reserved Sponsored by Justina Tozzi, Allstate Agency
- 2'-2'6" English Equitation Division** - Reserve Sponsored by Jenn Powell Designs
- 2'6" Schooling Hunter Division**
- 2' Jumper** - Champion Sponsored by The Kaplan Family Foundation
- Crossrail Jumper** - Champion Sponsored by The Sanctuary at Pine Meadow Farm
- English Pleasure Division** - Reserve Sponsored by Horse & Rider Tack Shop
- Beginner Western Division** - Reserve Sponsored by Congelosi Trailer Sales
- Junior Western Division** - Champion Sponsored by Billy Joe's Ribworks
- Open Division**

GYMKHANAS:

- Leadline Division** - Champion Sponsored by Rebellious Stables
- Walk/Jog Division**
- Walk/Jog/Lope Division** - Champion Sponsored by Knoellwood Equine
- Youth Division**
- Adult Division** - Reserve Sponsored by ODEN Electric

Thank You to all our Sponsors!

2026 HORSE SHOW RULES & REGULATIONS:

Wherever feasible this horse show will be operated in accordance with the current rules of the USEF (U.S. Equestrian Federation).

1. The Event Committee, G&M Riding Club, Inc. and Orange County Park will not be responsible for any accidents, injuries or damages which may occur to any person, animal, property or mode of transportation at the show, nor for the loss or destruction of any article of any nature whatsoever.
2. **All exhibitors are required to follow park rules.**
3. **Health requirements: Coggins test and proof of rabies vaccination via a vet certificate or letter dated within 12 months of event date are mandatory and have to be submitted at time of registration. No exceptions!**
**NOTE: G&M Riding club strongly recommends that all horses and ponies brought to the show ground be vaccinated for EHV-1.
4. Championship points are accumulated on the **SAME HORSE/RIDER COMBINATION**. Riders must compete in 2 shows to be eligible for points to count towards year-end awards. In the event of a horse becoming unsound or unable to be ridden, a substitute horse may be ridden with provided vet documentation that the original horse is unable to continue. ****Vets note must be provided at the event, or emailed within the week.**** If a horse is substituted at an event (show or gymkhana) points can be accrued in combination towards year-end awards.
5. For points to count towards year-end awards, riders must be G&M Members, participate in at least two events and must compete in more than ½ of the classes offered in the division.
6. All horses **must** be serviceably sound and free from contagious disease. Any horse not serviceably sound will be excused at the judge or committee's discretion
7. The judges and committee reserve the right to dismiss any unruly horses, exhibitors or spectators from the show grounds. No racing or fast riding will be permitted on the grounds. No bicycle riding allowed in or around the horse arenas or barn area.
8. Horses are **not permitted in the refreshment area**. No spectators near the entrance gates. No sitting on the arena rail.
9. Any class or division with less than 2 entries may be cancelled or combined at the discretion of the committee. The Event Committee reserves the right to close a class. If a class is held with only one entry (exhibitor request) a ribbon will be awarded but no points will be given. If an entire division is run with only one entry, no Day of Champion ribbon will be awarded.
10. In case a horse or pony is entered and not exhibited, the **fee will be**

forfeited, except in the case of illness or injury. Vet certificate or doctors note **required for a refund**, subject to a \$15 office handling fee. All refunds will be made by mail. If an entry is scratched due to weather, entry fees will be returned minus the office fee and EMT fee.

11. **No alcoholic beverages** allowed on the grounds.
12. No stallions may be shown by Beginner, Novice or Junior riders.
13. All riders must be neatly and suitably dressed in appropriate attire for the class entered (all divisions). ASTM approved safety helmets are recommended for all riders but is **mandatory** for riders under the age of 18. Helmets must be fitted properly. No riders will be penalized for wearing a helmet. G&M will not supply or fit helmets
14. Release forms **must** be signed by all riders, and a parent or legal guardian **must** sign entry release forms if under 18 years old. All adults must sign their own entry forms.
15. No boots, bell boots or martingales are permitted in Hunter Flat or Pleasure classes. Martingales are allowed in over fences only.
16. When rings are not in use, schooling will be allowed. Warm up time **will be scheduled and announced**. An ASTM approved safety helmet and riding boots or riding sneaker are required to be worn when schooling, competing, or riding on the grounds. Schooling for jumps is printed in the schedule. For safety purposes all "traffic flow" during schooling breaks will be governed by the G&M staff in the booth and/or in the ring. All commands to be strictly enforced or riders will be excused and their entry fees forfeited.
17. Any checks returned as non-negotiable will be subject to a \$25 returned check fee.
18. Birth certificate or other suitable proof of age is required for all riders in the Leadline, Walk/Trot, Children's, Short Stirrup and Junior Divisions.
19. Riders entering classes in which they are not eligible to compete will be dismissed and their entry fee forfeited. (For example: if you have cantered at any show you may not enter Walk/Trot classes at this show.)
20. Should any question or dispute arise not provided for in the foregoing, the same shall be referred to the Event Committee, whose decision shall be final.
21. All decisions of the judge are final.
22. Show ring will open at 7:00 am for schooling.
23. **Advance class calls will be made. The in-gate will close 2 minutes after the first horse enters the ring for a class. Entry fee will be forfeited for missed classes. It is the exhibitor's responsibility to be prepared for all classes.**
24. All exhibitors are asked to clean up after themselves and their horses.

G&M Riding Club reserves the right to add, cancel or combine classes.

GENERAL CLASS DESCRIPTIONS:

Crossrail/Over Fences- Individual class courses to be posted by the English Booth. If the Horse is being judged: on performance, soundness and suitability to purpose. If the Rider is being judged: on seat, hands and overall performance.

Fitting and Showmanship (F&S)- To be shown in halter or bridle. Judged on finish, presentation and showmanship. Conformation does not count.

Get Your Shine On- Spit and Shine Sweepstakes: In-hand showmanship class that requires elbow grease and the ability to spit shine your horse to a sparkle. Rider's turn-out will also be judged and should be spick 'n span clean from toes to nose. Horse should be easy to handle, work effortlessly off handler's cues, allow judge to approach and move around without concern, and stand still when asked.

Horsemanship/Equitation- To be judged at a walk, jog/trot, lope/canter (as appropriate to individual class) both ways of the ring. To perform at the discretion of the judge. To be judged on seat, hands and overall performance.

Jumpers- Course of fences of varying difficulty. Based on both speed and acuity.

Pattern- To perform a designated pattern at required gaits. If the Horse is being judged: on manners and performance. If the Rider is being judged: on seat, hands, and accuracy in completing the pattern.

Pleasure- To be shown at a walk, jog/trot, lope/canter (as appropriate to individual class) both ways of the ring. To be judged on manners, performance and suitability to purpose.

Ranch Riding- Pattern class focused on simulated tasks performed outside of the arena, judged on the horses ability and willingness to perform with a natural, working movement.

Road Hack- To be shown at a walk, jog/trot, extended trot, lope/canter and hand gallop. To stand quietly and back readily. Emphasis shall be placed on suitability to purpose.



HORSE SHOW DIVISIONS

Any year-end championship class with 9 or more riders in the class will get double pointed.

Rings open for start at 8am.

Get Your Shine On: Open to all riders, from youth to senior. \$20.00 entry fee, 50% to winner, 50% to benefit OCHFC (no ribbons). Class will run mid-way through the show. This is an opportunity for non-riders to participate in the show.

- Sponsored by On Par Golf Carts & Services, Inc.

20. Get Your Shine On English & Western

Leadline (7 & Under): A Year-End Championship division. Open to all riders 7 years and under or special needs/therapeutic riders. Judged on seat and hands, to be led by an adult. Riders in this division may not compete in any other division. Must wear an approved ASTM helmet. If enough riders participate, class may be split.

- Reserve Sponsored by Butler Const. Group

1. Leadline Walk
2. Leadline W/T
3. Leadline Ground Poles

Walk/Trot Equitation: A Year-End Championship division. Open to all riders who have not competed in any W/T/C classes at any show. May be asked to do sitting trot, posting trot or half seat. Not eligible for any other divisions with the exception of Beginner Western. Classes will be split between juniors and adults if entries warrant.

- Reserve Sponsored by Beam Enterprises, Inc.

4. Walk/Trot Equitation W/T
5. Walk/Trot Equitation Test*
6. Walk/Trot Ground Poles (4-fences)
7. Walk/Trot Ground Poles (4-fences)

* **Equitation Test:** To be performed individually or as a group. Riders may be asked to half-seat at walk or trot, or halt, trot a 20 meter circle either to the right or left at judges direction, showing the correct diagonal. (At left diagonal, rider should be sitting the saddle when left front leg is on the ground; at right diagonal, rider should be sitting the saddle when right front leg is on the ground; when circling clockwise at a trot, rider should be on left diagonal; when circling counterclockwise, rider should be on the right diagonal.) At the halt, shorten/lengthen reins, drop and pick up stirrups, answer level appropriate questions such as horses color, age and breed.

Mini Crossrail Equitation: A Year-End Championship division. Cross Rails not to exceed 12". Open to riders that have not competed in 18" Cross Rails at any shows. If you have jumped in 18" Cross Rails at any show you cannot compete in this division. Can not compete in any other division.

Trotting courses will not be penalized.

8. Mini Crossrail Equitation W/T
9. Mini Crossrail Equitation W/T/C
10. Mini Crossrail Equitation 12"
11. Mini Crossrail Equitation 12"



Costume Class (Fall Only): There will be a costume class which will be judged. Everyone is encouraged to dress up themselves and their horses. Come have fun with your horse. Custom ribbons awarded.

50. Costume Class

Crossrail Hunter: A Year-End Championship division. Open to all Amateur and Junior riders. Division is judged on the horse and is designed as a comfort and confidence builder for horses and riders who are either green; new to the sport and/or their horse; started riding later in life, or for various reasons have taken a hiatus from riding. Riders may remain in this division until they feel safe and ready to progress into another division. Canter may be split into small groups if warranted. **Trotting courses will not be penalized.**

12. Crossrail Hunter W/T
13. Crossrail Hunter W/T/C
14. Crossrail Hunter 18"
15. Crossrail Hunter 18"

Short/Long Stirrup: A Year-End Championship division. Short Stirrup is limited to riders who have not reached 14th birthday as of January 1st, 2026. Riders older than 14 can compete in Long Stirrups. If entries warrant, classes will be split into two separate divisions. If you have jumped higher than 18" at any show you cannot compete in this division. Can cross enter into Cross Rail Hunter division if class requirements are met.

Trotting on course will be penalized.

- Champion Sponsored by EZ Buy Auto Sales, Inc.

16. Short/Long Stirrup W/T
17. Short/Long Stirrup W/T/C Equitation Test*
18. Short/Long Stirrup 18" Crossrails
19. Short/Long Stirrup 18" Crossrails

* **Equitation Test:** To be performed individually or as a group. Riders may be asked to half-seat at a walk or trot, halt and back, trot a 20 meter circle either to the right or left, trot a figure eight showing either sitting or posting trot at the correct diagonal, at judges direction. (At left diagonal, rider should be sitting the saddle when left front leg is on the ground; at right diagonal, rider should be sitting the saddle when right front leg is on the ground; when circling clockwise at a trot, rider should be on left diagonal; when circling counterclockwise, rider should be on the right diagonal.) At the halt, shorten/lengthen reins, drop and pick up stirrups, answer level appropriate questions such as how to tell you're on the correct diagonal or lead.

English Pleasure: A Year-End Championship division. Open to all riders including riders in the Walk/Trot division. Horse is judged more than the rider. Horse and ponies to be judged on manners, performance and soundness at the walk, trot, canter. May be asked to halt and/or backup.

- Reserve Sponsored by Horse & Rider Tack Shop

21. English Pleasure W/T
22. English Pleasure W/T/C
23. English Pleasure Road Hack

2' Schooling Hunter: A Year-End Championship division. Open to all horses and riders. Fences not to exceed 2'. Judged on the horse/pony, both on the flat and over fences. To be shown at walk, trot, canter and as described in each class. May be asked to hand gallop. To be judged on manners, performance, suitability to purpose. **Not penalized for trotting corners.** This horse and rider combination may cross enter into Junior, 2' or Open divisions. The same horse may be ridden by other exhibitors as eligible in Walk/Trot, Short/Long Stirrup or 2' Divisions.

- Reserved Sponsored by Justina Tozzi, Allstate Agency

24. 2' Schooling Hunter W/T/C
25. 2' Schooling Hunter Road Hack
26. 2' Schooling Hunter 2' Over Fences
27. 2' Schooling Hunter 2' Over Fences

2'-2'6" Equitation: A Year-End Championship division. Open to all riders, Junior and Adult. May be asked to do sitting trot and/or half-seat at the canter. Riders will be judged together at their choice of height 2' or 2'6" fence options.

- Reserve Sponsored by Jenn Powell Designs

28. 2'-2'6" English Equitation W/T/C
29. 2'-2'6" English Equitation Test*
30. 2'-2'6" English 2' or 2'6" Over Fences
31. 2'-2'6" English 2' or 2'6" Over Fences

* **Equitation Test:** To be performed individually or as a group. Riders may be asked to half-seat at a walk or trot, halt and back, trot or canter a 20 meter circle either to the right or left, trot a figure eight showing either sitting or posting trot at the correct diagonal. (At left diagonal, rider should be sitting the saddle when left front leg is on the ground; at right diagonal, rider should be sitting the saddle when right front leg is on the ground; when circling clockwise at a trot, rider should be on left diagonal; when circling counterclockwise, rider should be on the right diagonal). Answer level appropriate questions such as how to tell you're on the correct diagonal or lead.

2'6" Schooling Hunter: A Year-End Championship division. Open to all horses and riders. Fences not to exceed 2'6". Judged on the horse/pony, both on the flat and over fences. To be shown at walk, trot, canter and as described in each class. May be asked to hand gallop. To be judged on manners, performance, suitability to purpose. **Not penalized for trotting corners.** This horse and rider combination may cross enter into Junior, 2'6" or Open divisions. The same horse may be ridden by other exhibitors as eligible in Walk/Trot, Short/Long Stirrup or 2'6" Divisions.

32. Schooling Hunter W/T/C
33. Schooling Hunter Road Hack
34. Schooling Hunter 2'6" Over Fences
35. Schooling Hunter 2'6" Over Fences

Beginner Western: A Year-End Championship division. Limited to riders of any age who have not cantered in any show.

- Reserve Sponsored by Congelosi Trailer Sales

102. Beginner Western Fitting & Showmanship
105. Beginner Western Pleasure
108. Beginner Western Road Hack
111. Beginner Western Pattern
114. Beginner Western Ranch Riding

Junior Western: A Year-End Championship division. Limited to riders who have not reached 19th birthday as of January 1st, 2026.

- Champion Sponsored by Billy Joe's Ribworks

101. Junior Western Fitting & Showmanship
104. Junior Western Pleasure
107. Junior Western Road Hack
110. Junior Western Pattern
114. Junior Western Ranch Riding

Open: A Year-End Championship division.

100. Open Western Fitting & Showmanship
103. Open Western Pleasure
106. Open Western Road Hack
109. Open Western Pattern
112. Open Western Ranch Riding

2' Jumpers: A Year-End Championship division. Division based on both speed and acuity. To be ridden over a course not to exceed 2' in height. Excessive speed will be disqualified per Management/Judge discretion.

Time Allowed to be based off of 350 m/m

- *Champion Sponsored by The Kaplan Family Foundation*

1J. 2' Jumpers - Power & Speed (Table 2, Sec. 2(d))

2J. 2' Jumpers - Jump Off (Table 2, Sec. 2(b))

Crossrail Jumpers: A Year-End Championship division. Division based on both speed and acuity. To be ridden over a course of Crossrails, not to exceed 18" in height. Excessive speed will be disqualified per Management/Judge discretion. *Time allowed to be based off of 325 m/m*

- *Champion Sponsored by The Sanctuary at Pine Meadow Farm*

3J. Crossrail Jumpers - Power & Speed (Table 2, Sec. 2(d))

3J. Crossrail Jumpers - Jump Off (Table 2, Sec. 2(b))

*** Power & Speed**

Table II, Sec. 2 (d)-Scores are decided by adding together the faults incurred over both phases and any penalties for exceeding the Time Allowed if any. Whether or not a competitor has gone clear in the first phase, they will, upon crossing the finish line, commence the second phase course. Time starts as the horse crosses the finish line for the initial course.

*** Jump Off**

Table II, Sec. 2 (b)—The first round and first jump-off, if any, are decided by adding together the faults incurred over the course and any penalties for exceeding the Time Allowed. If a competitor has gone clear in the first round, the competitor will, without leaving the ring, upon an audible signal, commence the designated jump-off course within 45 seconds. A competitor with a clear round may dismount, and with assistance if necessary, adjust tack and/or equipment; however, upon the audible signal to begin their round, the competitor is responsible to adhering to the 45 seconds rule. In case of a fall of a Rider and/or Horse after crossing the finish line of the first round, the Rider/Horse combination may not continue to the jump-off, and will be placed according to their Score in the first round. A competitor who leaves the arena after a clear round (before or after the tone) will be considered to have withdrawn from the jump-off. If there are no clear rounds and a tie exists for first place, the results will be determined by the scores and time from that round.



Good Luck to all our competitors



2026 RING 1 CLASS SCHEDULE

1J. 2' Jumpers - Power & Speed

Table 2, Sec. 2(d)

2J. 2' Jumpers - Jump Off

Table 2, Sec. 2(b)

***Schooling- Crossrail Jumpers**

3J. Crossrail Jumpers - Power & Speed

Table 2, Sec. 2(d)

4J. Crossrail Jumpers - Jump Off

Table 2, Sec. 2(b)

***Schooling- Crossrail Hunter**

12. Crossrail Hunter W/T

13. Crossrail Hunter W/T/C

14. Crossrail Hunter 18"

15. Crossrail Hunter 18"

***Schooling- Short/Long Stirrup**

16. Short/Long Stirrup W/T

17. Short/Long Stirrup W/T/C Eq. Test

18. Short/Long Stirrup 18" Crossrails

19. Short/Long Stirrup 18" Crossrails

***Schooling – Get Your Shine On**

20. Get Your Shine On – **ALL RIDERS**

***Schooling – Eng. Pleasure only**

21. English Pleasure W/T

22. English Pleasure W/T/C

23. English Pleasure Road Hack

***Schooling – 2' Schooling Hunter**

24. 2' Schooling Hunter W/T/C

25. 2' Schooling Hunter Road Hack

26. 2' Schooling Hunter 2' O/F

27. 2' Schooling Hunter 2' O/F

***Schooling – 2'-2'6" Eng. Eq.**

28. 2'-2'6" English Equitation W/T/C

29. 2'-2'6" English Equitation Test

30. 2'-2'6" English Equitation O/F

31. 2'-2'6" English Equitation O/F

***Schooling – 2'6" Schooling Hunter**

32. 2'6" Schooling Hunter W/T/C

33. 2'6" Schooling Hunter Road Hack

34. 2'6" Schooling Hunter 2' O/F

35. 2'6" Schooling Hunter 2' O/F

50. Costume Class (*Fall Event Only*)

Ring 1 Starts at 8am

**PLEASE NOTE: All Schooling Breaks will be 5 minutes in duration.*

2026 RING 2 CLASS SCHEDULE

100. Open Western F&S

101. Junior Western F&S

102. Beginner Western F&S

***Schooling – All Western Divisions**

103. Open Western Pleasure

104. Junior Western Pleasure

105. Beginner Western Pleasure

106. Open Western Road Hack

107. Junior Western Road Hack

108. Beginner Western Road Hack

109. Open Western Pattern

110. Junior Western Pattern

111. Beginner Western Pattern

112. Open Western Ranch Riding

113. Junior Western Ranch Riding

114. Beginner Western Ranch Riding

***Schooling**

1. Leadline Walk

2. Leadline W/T

3. Leadline Ground Poles

***Schooling- W/T Equitation**

4. W/T Equitation W/T

5. W/T Equitation Test

6. W/T Equitation Ground Poles (4 poles)

7. W/T Equitation Ground Poles (4 poles)

***Schooling- Mini Crossrails**

8. Mini Crossrail Equitation W/T

9. Mini Crossrail Equitation W/T/C

10. Mini Crossrail Equitation 12"

11. Mini Crossrail Equitation 12"

Ring 2 Starts at 8am

**PLEASE NOTE: All Schooling Breaks will be 5 minutes in duration.*



2026 G&M DATES

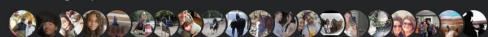
Gymkhanas **Horse Shows**
APRIL 26TH MAY 31ST
JUNE 7TH JUNE 14TH
SEPTEMBER 13TH AUGUST 23RD



Edit

G&M Riding Club

Public group · 780 members



+ Invite

Share

Discussion Featured Events Media Files People

Q

...

Write something... Add topic

Anonymous post

Feeling/activity

Poll

Featured

Add

Tracey O'Hara
February 6

Hi Everyone!

It might be the coldest week of the...

HORSESHOWING.COM
HorseShowing.com *

4 Like Comment

Alyson Reach
February 6

Hello Riders! Our 2026 Season Dates have been chosen and confirmed. Our Horse Shows will be May 31st, June 14th and August 23rd and our Gymkhanas will be April 26th, June 7th and September 13th. Note all of our events this year are on Sundays. The events committee's are working on their updates for this year so keep checking back for posts about when...

13 Like Comment

About

Welcome All to the G & M Riding Club!
Where everyone is a star and the love of horses is as priceless as a smile! G&M is one of the oldest ridin... See more

Public

Anyone can see who's in the group and what they post.

Visible

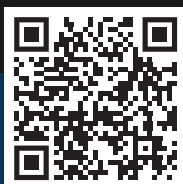
Anyone can find this group.

Learn more about this group

Most relevant

Alyson Reach
Admin Top contributor + Add topic March 16 at 9:36 AM

Friendly reminder to Board Members. We have a meeting tomorrow at 7:30pm via Zoom. Email with minutes and link will go out later this evening. If you are unable to attend please inform an exc. board officer.



Keep up to date with News and Events fast by visiting and following our Facebook group.

G&M MEMBERSHIP PERKS & AWARDS

Year-End Championships

See Page 1

Kathy Croak/Henry Tuthill Memorial Scholarship

\$1000 Scholarship awarded to a graduating senior who is going to college, vo-tech school, joining the US Military or other public service. Please contact a board officer if interested in applying.

G&M Junior Endowment Award

To assist G&M Riding Club Volunteer Junior Members in the pursuit of competing at regional/state/nationally recognized shows/rodeos/gymkhanas or further their Equine education at nationally recognized clinics or seminars. \$1000 available for up to four qualifying members.

Lucille Cox Memorial Jr. Excellence Award

In 2009 G&M established this award in the memory of Lucille Cox, a long standing member who dedicated many volunteer hours of service to the Club for over 20 years. This award is presented to a volunteer Junior member who displays outstanding community spirit, merit and volunteerism.

High-Point Trainer - Open Shows

To be awarded to the trainer whose riders accumulate the most points during the 2026 G&M Riding Club Open Shows.

High-Point Trainer - Gymkhana

To be awarded to the trainer whose riders accumulate the most points during the 2026 G&M Riding Club Gymkhanas.

Other Membership Benefits

Yearly Show Directory • Informational Meetings
Discounted Rates at Events • Food & Refreshments at Events
Annual Awards Banquet • Educational Opportunities • Juniors Group
Junior Events & Activities • Team Building/New Relationships

Visit our website at gandmridingclub.com for information on eligibility and application forms.

2026 GYMKHANA RULES

1. The Event Committee, G&M Riding Club, Inc. and Orange County Park, will **not** be responsible for any accident which may occur to any rider, driver, groom, spectator, animal or carriage at the show, nor for the loss or destruction of any article of any nature whatsoever.
2. **All exhibitors are required to follow park rules noted on cover.**
3. In case a horse or pony is entered and not exhibited, the **fee will be forfeited, except in the case of illness or injury.** Vet certificate or doctor's note **required for a refund**, subject to a \$15 office handling fee. All Refunds will be made by mail.
4. **Health requirements: Coggins test and proof of rabies vaccination via a vet certificate or letter dated within 12 months of event date are mandatory and have to be submitted at time of registration. No exceptions!**
****NOTE:** G&M Riding club strongly recommends that all horses and ponies brought to the show ground have been vaccinated for EHV-1.
5. Release forms **must** be signed by all riders and a parent if under 18 years old. All adults must sign their own entry forms.
6. Any checks returned as non-negotiable will be subject to a \$25 returned check fee.
7. All riders **must wear appropriate clothing** to include: long pants, shirt, and heeled riding/work boots. T-shirts and sleeve-less shirts are acceptable. No belly shirts, halter or tank tops.
8. ASTM approved riding helmets recommended for every participant, but **required** for all riders under 18 years old as of 1/1/26. Helmets must be worn and correctly fitted and secured whenever the rider is mounted. **No Exceptions.** G&M will not supply or fit helmets.
9. **Artificial aids to keep rider on the horse or feet in the stirrups will be permitted for riders 18 and older only.**
10. Excessive use of spurs, crops or over-unders **will not be tolerated.**
11. Equipment should always fit the rider and horse.
12. Unsound horses will be disqualified at the discretion of the Gymkhana Event Committee.
13. The Event Committee will dismiss any unruly horses, riders or spectators from the premises. Abusive language or behavior will not be tolerated under any circumstances.
14. Only adults may ride stallions.
15. Three-stride rule for Walk/Jog will be enforced. 5 seconds will be added each time a jog is broken (more than 3 strides at a lope). Any rider in the Walk/Trot division who lopes MORE THAN 6 strides will be disqualified from that class.
16. Riders crossing the line in the keyholes pattern will receive a 5 second penalty.

17. Riders entering classes in which they are not eligible to compete will be dismissed and their entry fee forfeited. (For example: if you have cantered at any show you may not enter Walk/Trot classes at this show.)
18. Gymkhana point system will be 6-5-4-3-2-1.
19. Points will be awarded for the same **HORSE/RIDER COMBINATION.** Divisions are based on the rider's ability, not the horses', including those classes that have an age requirement. Riders must compete in 2 events to be eligible for points to count towards year-end awards. In the event of a horse becoming unsound or unable to be ridden, a substitute horse may be ridden with provided vet documentation that the original horse is unable to continue. ****Vets note must be provided at the event, or emailed within the week.**** If a horse is substituted at an event (show or gymkhana) points can be accrued in combination towards year-end awards.
20. For points to count towards year end awards, riders must be G&M Members, participate in at least 2 events and must compete in more than ½ of the classes offered in the division.
21. Any class or division with less than 2 entries may be cancelled or combined at the discretion of the committee. The Event Committee reserves the right to close a class. If a class is held with only one entry (exhibitor request) a ribbon will be awarded but no points will be given. If an entire division is run with only one entry, no Day of Champion ribbon will be awarded.
22. Running in the gate is optional for all divisions.
23. Re-runs for timer failure or equipment breakage to include bit, reins, girth or bridle. **No reruns for improperly fitted equipment.**
24. Penalties for **Year-End and Open Divisions:**
 - A. *Five seconds for each obstacle knocked over.*
 - B. *Off course for any class is a No Time.*
 - C. *Attempts must be made at all obstacles such as poles, etc. or rider will be off course and no time will be given.*
25. Horses refusing to enter the arena may ask for assistance, 3rd time refusal may result in disqualification from the class.
26. **Spotters** may be allowed in the arena during Leadline, Walk/Jog or exhibition runs only.
27. **All Exhibitions will run at the start of each class type.**
28. **No horses will be permitted in the refreshment area.**
29. All exhibitors are asked to clean up after themselves and their horses.
30. In the case of any disputes, the decision of the Event Committee shall be final.

All Gymkhanas are also governed by G&M Show Rules.



Turn 'N Burn
GYMKHANA SERIES

APRIL 26TH
JUNE 7TH
SEPTEMBER 13TH

GYMKHANA DIVISIONS

Leadline: A Year-End Championship division. Open to children ages 2-7 and special needs. Equipment should fit the rider. Reins should be in the rider's hands, if possible. An adult should lead the mount and another person can assist the rider.

- Champion Sponsored by Rebellious Stables

1. Barrel Dash
6. Cloverleaf Barrels
12. Speed Barrels
17. Pole Bending
22. Keyhole

Walk/Jog: A Year-End Championship division. Open to beginning riders who have not exceeded a walk or trot/jog. Riding at a faster gait in the practice ring will disqualify a rider from the division. A spotter may be in the arena (behind the timer) to guide the rider through the event. Five (5) second penalty if spotter makes contact with either mount or rider. May be split depending on number of participants.

2. Barrel Dash
7. Cloverleaf Barrels
13. Speed Barrels
18. Pole Bending
23. Keyhole

Walk/Jog/Lope: A Year-End Championship division. Open to riders of any age who can safely navigate a complete course at a Walk, Trot/Jog or Canter/Lope. Five (5) second penalty for galloping. Division may be split depending on number of participants.

- Champion Sponsored by Knoellwood Equine

3. Barrel Dash
8. Cloverleaf Barrels
14. Speed Barrels
19. Pole Bending
24. Keyhole

Youth: A Year-End Championship division. Riders who have not reached their 19th birthday as of 1/1/2026. Division may be split depending on number of participants.

4. Barrel Dash
9. Cloverleaf Barrels
15. Speed Barrels
20. Pole Bending
25. Keyhole

Adult: A Year-End Championship division. Division may be split depending on number of participants.

- Reserve Sponsored by ODEN Electric

5. Barrel Dash
10. Cloverleaf Barrels
16. Speed Barrels
21. Pole Bending
26. Keyhole

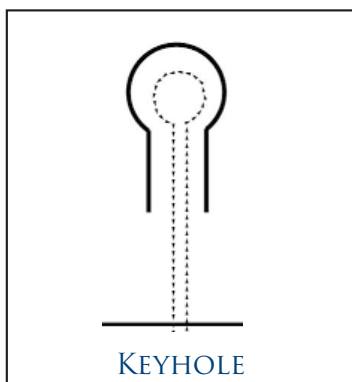
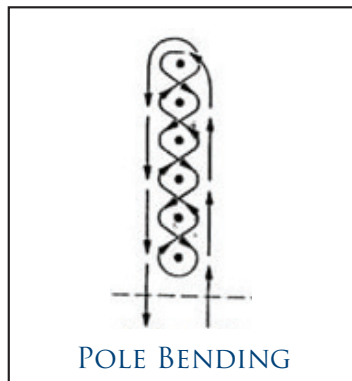
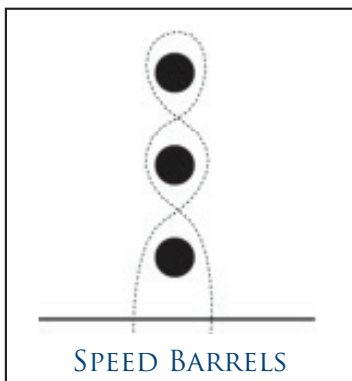
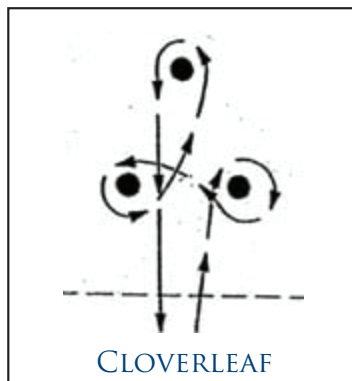
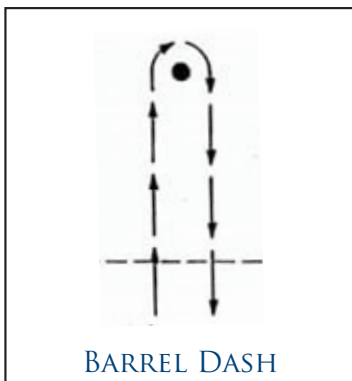


Costume Class (Fall Only): There will be a costume class which will be judged. Everyone is encouraged to dress up themselves, and their horses. Come have fun with your horse. Custom ribbons awarded.

50. Costume Class

Open Jackpot Barrels: Does **not** qualify for day-of or Year-End Champion/Reserve Champion awards. Open to all riders at all gaits. This is a payback division. **Entry fee: \$25 (Payback will be as follows: 1st 50% pot, 2nd 30% pot, 3rd 20% pot).** Must participate in at least 3 classes (in any division) in order to receive winning payouts.

11. Jackpot Barrels



2026 GYMKHANA ORDER OF GO

1. Barrel Dash Leadline*
2. Barrel Dash W/J
3. Barrel Dash W/J/L**
4. Barrel Dash Youth**
5. Barrel Dash Adult**
6. Cloverleaf Barrels Leadline*
7. Cloverleaf Barrels W/J
8. Cloverleaf Barrels W/J/L**
9. Cloverleaf Barrels Youth**
10. Cloverleaf Barrels Adult**
11. \$\$ Jackpot Barrels Open
12. Speed Barrels Leadline*
13. Speed Barrels W/J
14. Speed Barrels W/J/L**
15. Speed Barrels Youth**
16. Speed Barrels Adult**
17. Pole Bending Leadline*
18. Pole Bending W/J
19. Pole Bending W/J/L**
20. Pole Bending Youth**
21. Pole Bending Adult**
22. Keyhole Leadline*
23. Keyhole W/J
24. Keyhole W/J/L**
25. Keyhole Youth**
26. Keyhole Adult**

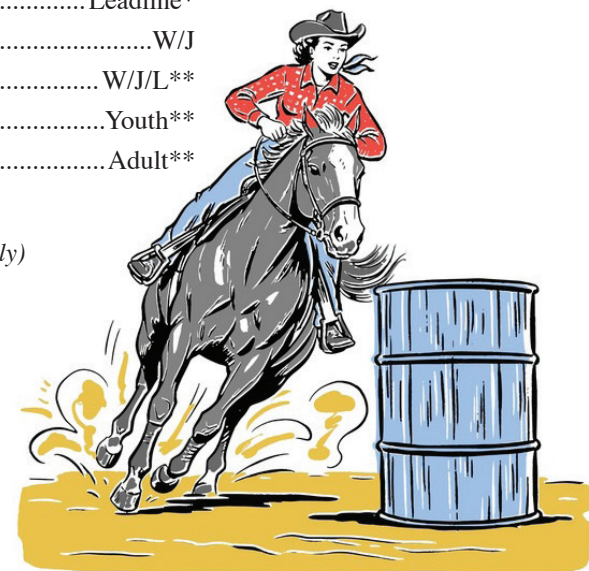
\$\$ - Payback classes.

* - Open to riders age 2-7 or special needs/therapeutic riders.

** - May be split depending on the number of participants.

***PLEASE NOTE:**
If you are not at the gate and ready after 3rd call for run, you may be disqualified.

50. Costume Class (Fall Event Only)



PLATINUM SPONSORS



DIAMOND SPONSORS



MAY 31ST



JUNE 14TH



AUGUST 23RD

DIRECTIONS TO ORANGE COUNTY PARK

Newburgh/Beacon Bridge: I84 to Exit 5, turn left off ramp, turn right at light. Turn left onto Route 416 at “T” intersection. Right turn onto Route 416. Past horse farm, turn right onto Grove Street and continue to horse arenas., or, take the next right turn off Route 416 and enter at the Golf and Winter Sports Building.

From Port Jervis: I84 to Exit 5, turn right off ramp, then make immediate right turn. Follow directions above.

From Route 17: Exit 124 onto Route 207 through Goshen. Go under railroad tunnel and bear left onto Route 416. Enter via the Golf and Winter Sports building or lower entrance before large horse farm.

From Middletown: Route 211 to Montgomery. Right turn onto Route 416. Past horse farm, turn right onto Grove Street and continue to horse arenas.

From Route 94 in New Jersey: Take Route 94 into New York, continue through Florida on Route 17A into Goshen, which turns into Route 207. Follow as directed above from Route 17.

From Route 23 in New Jersey: Take Route 23 to Union Valley Road in West Milford. Take Union Valley past the stop sign at Macopin Road. Keep left at the shopping center and go past Pinecliff Lake on your left. Keep left onto White Road, then turn left on Warwick Turnpike. Turn right onto Route 94 and follow as above.

From Route 287 in New Jersey: Take Route 287 to the NYS Thruway (Route I87N). Get off at Exit 16 (Route 6/17W). Get off at Exit 124 (Goshen) and follow Route 207 as listed above in Route 17 directions.

2026 EXECUTIVE OFFICERS

President: Tracey O’Hara

845-401-7757 ~ traceyohara1985@gmail.com

Vice President: Jackie Dushaj

347-234-0844 ~ jacquelina81@gmail.com

Secretary: Alyson Reach

845-781-8776 ~ gandmridingclub@hotmail.com
as.greyfox@gmail.com

Treasurer: Vacant

BOARD & EVENT CHAIR MEMBERS

Rose Budney

Jae Samuels

Tabitha Collins

Ben Yanus

Shaun Parr

INFORMATION CONTACTS

Scholarship/Sponsorships - Officers

Directory - Alyson Reach

Gymkhana Chair - Tabitha Collins

Horse Show Chair - Tracey O’Hara

Junior Advisor - Vacant

Membership - Jae Samuels & Alyson Reach

Social Media/Communication - Alyson Reach

Website - Dariann Zielinski

Horse Shows in the Park

SUNDAY, MAY 31, 2026

Ring 1 Judge: Nicole Denny-Rinker • Ring 2 Judge: Patricia Towle
SPONSORED BY HEALTHCARE MANAGMENT SOLUTIONS, LLC

SUNDAY, JUNE 14, 2026

Ring 1 Judge: Patricia Towle • Ring 2 Judge: Katie Matthews
SPONSORED BY SILENT W HORSESHOEING, INC.

SUNDAY, AUGUST 23, 2026

Ring 1 Judge: Randi Moore • Ring 2 Judge: Trish Hetman
SPONSORED BY DONATE VEHICLES USA

ENTRY FEES: MEMBERS \$15 NON-MEMBERS \$20



Turn 'N Burn GYMKHANA SERIES

SATURDAY, APRIL 26, 2026

SATURDAY, JUNE 7, 2026

SATURDAY, SEPTEMBER 13, 2026

ENTRY FEES: MEMBERS \$10 NON-MEMBERS \$15
OPEN \$25

CURRENT NEGATIVE COGGINS & RABIES MANDATORY
EHV-1/RHINO CERTIFICATE STRONGLY ENCOURAGED

*****HELMET LAW STRICTLY ENFORCED*****

FOOD TRUCK ON SITE FOR FOOD & BEVERAGES
ALL DOGS MUST BE LEASHED